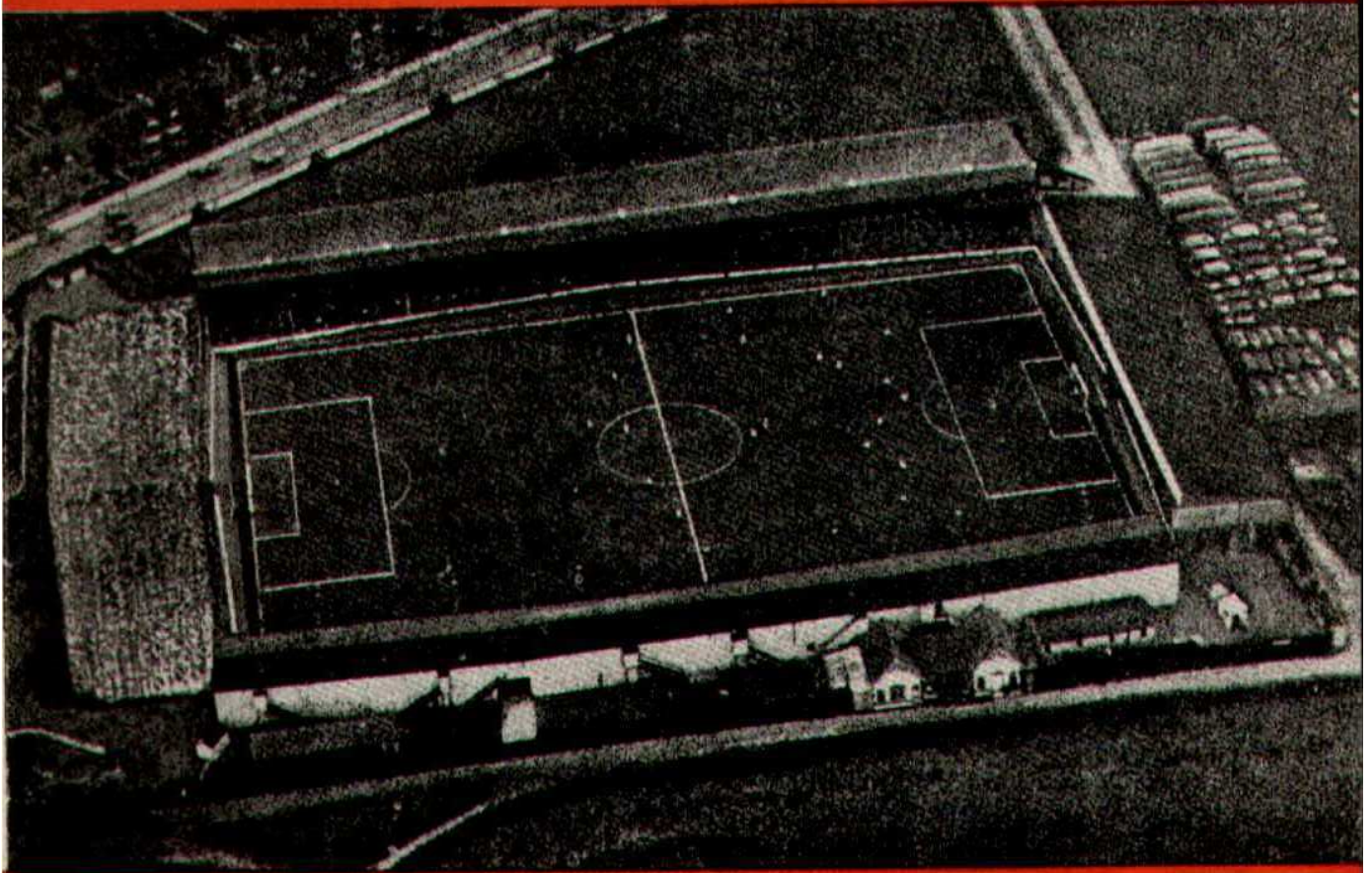




SWINDON TOWN FOOTBALL CLUB



SATURDAY, DECEMBER 9th, 1961

DIVISION III

SWINDON TN. *v.* SOUTHEND U.

Kick-off 3 p.m.

Official Programme **4d.**

**SOUTHERN LAUNDRY
CO. LTD.**

Launderers and Dry Cleaners



TELEPHONE 4161

STATION RD., SWINDON

GO MODERN — GO ELECTRIC

for

TELEVISION, RADIO AND
DOMESTIC APPLIANCES

D. ROBSON

22 HAVELOCK STREET

6602 Swindon 6602

Make your Goal the

EAGLE HOTEL

(Prop.: Tom Hamilton)

WORTHINGTON :: GUINNESS

DEVENISH BEERS :: BASS

REGENT ST., SWINDON

LITTLE & CO. LTD.

The Name Linked with Service
and Value

*The Popular Ladies' and Men's
Complete Outfitters*



31-32 FLEET ST., SWINDON

Telephone 2831

NEXT MATCH . . .

HELLENIC LEAGUE

SWINDON TN. v. THAME

SATURDAY NEXT, DECEMBER 16th, 1961

Kick-off 2.30 p.m.

Dr. BARNADO'S HOMES

Take care of 7,500 needy children and
still depend on public support

Send your donation to—

**Barnardo House, Stepney
Causeway, London, E.1.**

Donated by: Mrs. S. Mutch, 60
Cricklade Road, Swindon

LEESE, ING & Co. Ltd.

Incorporating BARKER & CO.

*Mineral Water and
Squash Manufacturers*



LANSDOWN RD., SWINDON

Telephone 2744/2320

HULFORD MOTORS Ltd.

SELF DRIVE HIRE

Fleet of 1961 Fords
Populars - Anglias - Consuls

SHRIVENHAM ROAD

(200 yards from Football Ground)

Phone 4934

LARGE CAR PARK AVAILABLE

For Quality
FLOWERS, FRUIT & VEGETABLES
Also FROZEN FOODS

**CLARKE'S
of Old Swindon**

Proprietors: A. G. G. & J. A. W. HUNT

64 DEVIZES ROAD - SWINDON

'Phone: 2337

ORDERS DELIVERED

SWINDON TOWN FOOTBALL COMPANY LIMITED

Registered Office: COUNTY GROUND, SWINDON



Directors:

Mr. W. J. CASTLE (Chairman)

Mr. H. E. LANE (Vice-Chairman)

Mr. B. T. HAMILTON (Hon. Treasurer)

Messrs. C. CHANDLER, J.P., J. DAVIES,

R. FRICKER, C. J. GREEN, F. PLYER, H. WILLIAMS and K. H. WILMER

Manager: B. J. HEAD.

Secretary: R. A. MORSE

VOL. 12

SATURDAY, DECEMBER 9th, 1961

No. 15

Club Notes

At long last a League game at home. Since the Shrewsbury match, we have played at Peterborough, where we were unlucky to lose 2—3. Last Saturday we made the journey to Newport, never a happy hunting ground for Swindon, especially in the wet weather. The result a very creditable draw. In fact, we might easily have won this game. After being a goal down, we came back to lead 2—1 during the second half.

It was quite a coincidence our opponents introduced a new signing, one in whom Swindon was interested, namely Walsh, ex-Arsenal and Cardiff City. Supporters may wonder why this player went to Newport.

According to newspaper reports the fee was £4,000 (a lot of money), and this for a player nearing the end of his career, as he is now busily looking to the future. He is studying accountancy, and working full-time in an office. Therefore

he is a part-time player, living and training at Cardiff. Had he signed for Swindon, the other players would only have met him on match days — not very satisfactory.

One of the great surprises in football last week was the appointment of Mr. J. Hill as manager of Coventry City. We wish him well and, while not wanting to enter into any controversy, we know that many feel (yes, in Swindon!) that there is still a certain amount of tradition and loyalty in football, although the game is being run more and more as a business.

The Hellenic League game on the ground last Saturday was a very one-sided affair. The training of our young lads soon shows itself in these games, and the opposition is quickly worn down. Our team can then indulge in almost exhibition football, sometimes at a slow pace. One wonders if this type of play provides a strong

THE WALCOT CHEMIST

WIDE RANGE OF COSMETICS, PERFUMES,
BABY NEEDS AND PHOTOGRAPHIC GOODS

10 SUSSEX SQUARE - WALCOT
TEL. 6680

M. J. REYNOLDS

Grocer

152/154 CRICKLADE ROAD
5479 SWINDON 5479

COOKED HAM OUR SPECIALITY

WATSON'S CENTRAL NEWSAGENCY

LTD.

Swindon's Leading Wholesaler

1 WELLINGTON STREET, SWINDON
Tel. 2049

L. WOLLEN

OFF LICENCE

WINES & SPIRITS

Arkell's Ales and Stout

373 Cricklade Rd., Swindon

Deliveries Daily Phone 3508

CLUB NOTES—continued

enough test for our younger players. On the other hand, if it's goals the spectators enjoy, they certainly get them.

Today we entertain very old friends in Southend. Like us, they have been members of Division 3 for many years, and their position in the League is near to ours. The game is sure to be a hard and close one. Fortunately, our team

seems to be coming back to form. The rhythm and slick, quick teamwork were apparent, especially during the second half at Newport. May this improvement continue and the confidence be restored. Then we shall see a repetition of last season, with a swift rise in the League position. The skill is there, just a little encouragement please.

— Thank you!

FOR ALL YOUR ANGLING NEEDS
CONSULT

FRANK WOODWARD

Swindon's Fishing Tackle Specialist

25 HAVELOCK ST., SWINDON
PHONE 3879

WE ARE SPECIALISTS IN —
OUTSIDE CATERING AND LICENSED BARS
FOR WEDDINGS, FETES, SPORTS DAYS, etc.

THE MASONS ARMS HOTEL

31 HIGH STREET - SWINDON 3522

H. E. LANE

(REGENT STREET) LTD.

The Pork Sausage Specialists

117 Victoria Road, Swindon

Telephone: 2336

COMLEY'S

Modern Music Centre

26 HAVELOCK ST., SWINDON

RECORDS - MUSIC - INSTRUMENTS

Top Twenty "Pops" always in stock
and wide selection of Jazz and Classics

PERSONAL SUPERVISION

Phone 3874

FIXTURES AND RESULTS TO DATE

DIVISION III			
1961			
Aug. 19	Portsmouth	H	1-3
21	Coventry City	A	1-2
26	Crystal Palace	A	1-3
29	Coventry City	H	3-3
Sept. 2	Bournemouth	H	1-1
4	Queen's Park R.	A	1-6
9	Watford	A	0-2
16	Hull City	H	1-1
19	Barnsley	H	1-1
23	Northampton T.	A	2-1
27	Barnsley	A	2-6
30	Lincoln City	H	4-0
Oct. 3	Grimsby Town	H	0-0
7	Brentford	A	0-1
10	Grimsby Town	A	1-0
13	Reading	H	4-1
17	Queen's Park R.	H	0-0
21	Bristol City	A	3-5
28	Bradford	H	3-2
Nov. 4 (1)	Kettering T.	H	2-2
8	Kettering T.	A	0-3
11	Shrewsbury Tn.	H	1-2
18	Peterborough U.	A	2-3
25	(2)		
Dec. 2	Newport County	A	2-2
9	Southend U.	H	
16	Portsmouth	A	
23	Crystal Palace	H	
26	Halifax Town	A	
30	Halifax Town	H	
1962			
Jan. 6 (3)	Notts County	A	
13	Bournemouth	A	
20	Watford	H	
27 (4)	Port Vale	H	
Feb. 3	Hull City	A	
10	Northampton T.	H	
17 (5)	Lincoln City	A	
24	Brentford	H	
Mar. 2	Reading	A	
10 (6)	Bristol City	H	
17	Bradford	A	
24	Notts County	H	
31 (S.F.)	Shrewsbury	A	
Apr. 7	Peterborough U.	H	
14	Port Vale	A	
20	Torquay Utd.	H	
21	Newport County	H	
23	Torquay Utd.	A	
28	Southend Utd.	A	
May 5	(Final)		

FOOTBALL COMBINATION

1961			
Aug. 22	Leyton Orient	H	0-0
Sept. 6	Southend Utd.	A	1-3
13	Portsmouth	A	1-7
20	Bournemouth	A	0-3
26	Birmingham	H	1-1
Oct. 4	Aldershot	A	1-2
10	Watford	H	1-3
Nov. 1	Millwall	A	0-1
7	Fulham	H	1-4
14	Southampton	H	2-0
22	Coventry City	A	2-1
29	Reading	A	1-3
Dec. 5	Brighton	H	4-2
12	Brentford	A	
19	Charlton	H	
1962			
Jan. 3	Chelsea	A	
9	Chelsea	H	
17	Leyton Orient	A	
23	Portsmouth	H	
31	Birmingham City	A	
Feb. 6	Bournemouth	H	
13	Watford	A	
20	Aldershot	H	
26	Queen's Park R.	A	
Mar. 6	Millwall	H	
14	Fulham	A	
20	Southend Utd.	H	
28	Southampton	A	
Apr. 3	Coventry City	H	
10	Reading	H	
17	Brighton	A	
23	Brentford	H	
May 2	Charlton	A	
To be arranged	Q.P.R.	H	

Our Visitors

SOUTHEND UNITED F.C.

Today we welcome to the County Ground the Officials and Players of Southend United F.C. The last meeting at Swindon of the two clubs was last season, when a 1—1 draw resulted. Our goal was scored by E. Hunt.

Details of the Southend players from whom the team will be selected are as follows:—

Peter Goy (Goalkeeper)

Born Beverley, Yorkshire. With Arsenal F.C. for 7 seasons. Joined Southend, October 1960. Height 6ft. Weight 11st. 6lb.

Alexander Anderson (Full Back) (Sandy)

Born Auchtermuchty, Scotland. Obtained from Newburgh, Scotland. Signed for Southend, April 1950. His 11th season. Height 5ft. 10in. Weight 10st. 10lb.

Jimmy Sheils (Right Back or Left Back)

Born in Derry, N. Ireland. First played amateur with Waterside Boys' Club, later turning professional for Manchester United in 1956. Manager Fenton's close-season signing. 2 Irish Youth International Caps, 2 Irish "B" International Caps to his credit. Height 5ft. 10in. Weight 11st.

Mortimer Costello (Half Back) (Lou)

Born Dagenham, Essex. Joined Southend from Aldershot in 1957, with whom he played as an amateur. Height 6ft. Weight 13st.

Peter Watson (Centre Half)

Born Stapleford, Notts. Transferred from Notts Forest, July 1959. Was a Notts Forest player since he was 16, and a product of their Youth XI. Height 6ft. 0½in. Weight 11st. 7lb.

Bobby Kellard (Inside or Wing Forward)

Born London. Product of Colts XI. Amateur with Southend for 3 seasons—1957, 1958, 1959. Signed professional forms for Southend, May 1960. Gained two England Under 18 International Caps. Height 5ft. 6in. Weight 10st. 4lb.

Alan Dicks (Left Half)

Born London. Signed from Chelsea F.C., November 1958. Height 5ft. 11in. Weight 12st 8lb.

Tony Bentley (Outside Right)

Born Trent Vale, Stoke-on-Trent. Turned professional 1956 with Stoke City F.C. Transferred to Southend, May 1961. Manager Fenton's close-season signing. Height 5ft. 6in. Weight 11st. 2lb.

Peter Corthine (Inside Right)

Born London. Amateur player with Tottenham. Signed professional forms for Chelsea 1956 for 3 seasons. Transferred to Southend, March 1960. Height 5ft. 5½in. Weight 9st. 5½lb.

Norman Bleanch (Centre Forward)

Born Co. Durham. Was amateur with Newcastle before joining West Ham 1959 as a professional. Manager Fenton's close-season signing. Has county honours to his credit. Height 6ft. 1in. Weight 13st. 2lb.

C. Dunn & Son

BUILDERS & DECORATORS

Alterations, Renovations, Conversions
Plumbers and Sanitary Engineers

503 CRICKLADE ROAD Tel. 2522

NOTTON'S CAFE

COUNTY ROAD

200 yards from Ground

RIGHT ON THE BALL

FOR PAINTS OF GOOD QUALITY

H. S. HODGES & SONS

(SWINDON) LTD.

CRICKLADE ROAD - SWINDON

PHONE 2422

Dulux, Brolac, Friary, Valspar, Wallcharm, etc.

Harold Fleming

24 REGENT CIRCUS - SWINDON

Phone 22813



FOR ALL SPORTS EQUIPMENT

Also, Scout, Guide, Cub and Brownie Wear

OUR VISITORS—continued

Len Goulden

Born Ilford. Son of Len Goulden of Arsenal fame. Joined Arsenal on leaving school, and turned professional for them in 1956. Joined Southend, July 1961. Manager Fenton's close-season signing. Height 5ft. 7in. Weight 10st. 4lb.

Arthur Williamson (Full Back)

With Clyde for four seasons. Has been with Southend United since May 1955. His 7th season. Born Ardblair, Scotland. Height 5ft. 9 $\frac{3}{4}$ in. Weight 10st. 6lb.

Pat Kerrins (Outside Left)

Born Fulham, London. Turned professional for Queen's Park Rangers in 1954. Transferred to Crystal Palace 1960. Pat joined Southend United, July 1961. Manager Fenton's close-season signing. Height 6ft. 1in. Weight 12st. 4lb.

John McKinven (Inside Left)

Born Campbell Town, Argyllshire. Signed for Southend 1960. Previously with Raith Rovers. Height 5ft. 9in. Weight 10st. 8lb.

GODDARD & Co.

Wholesale and Retail

WINE - SPIRIT - BEER
AND CIDER MERCHANTS

9 REGENT STREET, SWINDON

Telephone 2415

Also at

4 WINGATE PARADE, SWINDON

We are your **Main Distributors** for
VAUXHALL and **JAGUAR** cars
BEDFORD Vans and Trucks, etc.

Any make of Car or Truck
supplied - Used Vehicles a
specialised part of our
business.

SKURRAY'S
SWINDON

Telephone: 2266

H. HIBBERD LTD.

Plant Hire Contractors

TRACTORS and SCRAPERS
BULLDOZERS
DROTT SHOVELS
DIGGERS
ROAD ROLLERS

40 NEWPORT STREET, SWINDON

Telephone 6125

Swindon Bacon Curing Co. Ltd.

Specialists in
Bacon, Pork & Cooked Ham

50 FLEET STREET
SWINDON

Telephone: 2122

WARNES (Swindon) Ltd.

Electrical Contractors
Radio and Television

Contractors to:

SWINDON TOWN FOOTBALL CLUB

51/52 COMMERCIAL RD., SWINDON

'Phone 6346/7

160 COUNTY RD., SWINDON

'Phone 6346/7

9 SWINDON ST., HIGHWORTH

'Phone 379

7 CLIVE PARADE, SWINDON

'Phone 6346/7

DAY RETURN TICKETS

On Weekdays and Sundays (services permitting), available in each direction by any train the same day. From Swindon Junction to:-

	2nd Class
Bath Spa	7/6d.
Bristol (T.M.)	9/0d.
Weston-super-Mare	11/6d.

Other fares available. Ask for pamphlet B7/411, giving full information.

BRITISH RAILWAYS

Western Region

W. B. CARTER

Newsagent, Tobacconist and Confectioner
Large selection of Boxes of Chocolates
always in stock

CORONA, TIZER, DRINKS, etc.

Agents for Wall's Ice Cream

188/190 FERNDAL RD., SWINDON

Telephone: 3089

MILLS & MERRETT

H
O
U
S
E
F
U
R
N
I
S
H
E
R
S

SWINDON TOWN v. SOUTHEND UNITED

SWINDON TOWN

RIGHT WING

Colours: RED SHIRTS, WHITE TROUSERS

O'Hara

Wollen (2)

Morgan (4)

Owen (5)

Summerbee (7)

Hunt, E. (8)

Smith (9)

Referee—

Mr. P. G. Brandwood
(Wolverhampton)



Kellard (11) McKinven (10) Costello (12)

Kerrins (6)

Watson (5)

Anderson (3)

Goy

SOUTHEND UNITED

LEFT WING

These teams are subject to change

16-17 BRIDGE ST. SWINDON

ENGLAND'S QUALITY
SERVICE

Your Car washed in under 10 minutes

THE INSTANT CAR WASH

6/- ANY MAKE — 4 MINUTES

Local Stations

MARLBOROUGH ROAD
SWINDON

QUEENS ROAD
READING

Make your goal . . .

M^CILROYS RESTAURANT

Top of the Catering League
 COFFEE - LUNCHES - TEAS
 Parties catered for.
 Regent Street, Swindon. Tel. 5294

THE PLESSEY COMPANY Ltd.

After years of achievement have great expansion plans for the future.

- TECHNICAL STAFF
- CLERICAL STAFF
- MANUAL WORKERS

are essential for this progress.

Interested persons please apply to the Personnel Department.

ERRICKS LTD.

ND UNITED. Kick-off 3 p.m.
 DON TOWN
 SHIRTS, WHITE SHORTS LEFT WING

O'Hara
 Trollope (3)
 an (5) Chamberlain (6)
 Smith (9) Atkins (10) Jackson (11)



Linesmen —
 Red Flag —
 Mr. H. N. Lye
 (Weston-super-Mare)
 Yellow Flag —
 Mr. E. G. Dodge
 (Bath)

Costello (9) Corthine (8) Bentley (7)
 tson (5) Grievson (4)
 Williamson (2)

Goy
 END UNITED
 subject to alteration RIGHT WING

UPHOLSTERERS • REMOVALS

T. SWINDON PHONE 5365

LITY CAR WASHING SERVICE

in under 5 minutes by
IT CAR WASH
 — 4 WASHES £1

Stations:
 NS ROAD QUEENS ROAD
 EADING BRISTOL

INSIST ON

Garrard EQUIPMENT



For Superb Tape and Record Playing



Fitted by the World's leading manufacturers.

WILSONS (SWINDON) LTD.

BUILDERS OF
 MODERN ATTRACTIVE HOUSES
 AND BUNGALOWS

All enquiries to Head Office:
**90 COMMERCIAL ROAD
 SWINDON 6361-3**

ONE QUALITY ONLY—THE BEST!
FRESH SUPPLIES DAILY

York Road Fisheries

SWINDON

WET, DRY or FRIED Tel.: 3680

DEMPSTER ENTERPRISES, offer a modern fleet of 4 and 6 seater self-drive hire cars, for your pleasure and convenience. For advance bookings apply:-

Dempster Enterprises
38 VICTORIA ROAD, SWINDON
Tel. 6460

Rent your T.V. - Washing Machines
Spin Dryers - Electrical Installations
from

D. V. HOLLAMBY LTD.

138 High St., Wootton Bassett, Wilts.
Telephone 295
ALL LEADING MAKES IN STOCK

Howard Autos, Swindon's Main Cotton Motor Cycle distributors always have a good selection of guaranteed used cars for you to choose from.

HOWARD AUTOS
134/5 MANCHESTER ROAD
Tel. 6603
and at 3 WELLINGTON STREET, SWINDON

"You Lucky People"

Have you ever thought how lucky you are to be able to come and watch your favourite team? I know that when they have had a bad day you swear you will never watch them again, but what if that came about and you were not able to watch them? Nearly 900 people in Swindon and Wiltshire are unfortunately in that position because they are blind. Through the kind permission of the Directors of the Club and the help of the Supporters' Club, a collection for the Blind will take place at half-time today. Will you please help us to help them and be as generous as possible. Please try and realise how valuable a thing is sight and give accordingly.

'BAILEY'S'

2 Cheney Manor Road - Swindon
NEWSAGENT :: TOBACCONIST
CONFECTIONER
Personal Attention and Satisfaction
always assured.

MEET YOUR FRIENDS FOR AN
ENJOYABLE EVENING AT

THE KINGSDOWN INN

(Host A. W. Vann)
FULLY LICENSED - ARKELL'S BEERS
SNACKS, Etc.
Stratton St. Margaret. Tel.: 3283

A. WHEELER & SON

330 CRICKLADE ROAD

PHONE 2095

FOR QUALITY COALS
AND PROMPT SERVICE

Ring 4711 or call at
"The Corner Off Licence"
115 CRICKLADE ROAD
for your Wines, Spirits and Beers
Free Deliveries - Glasses loaned free
* * * * *
Lowest Terms for Self Drive Cars

Supporters' Club Notes

It is said that listeners seldom hear any good spoken of themselves, but a colleague, travelling by train, overheard a tribute paid to Swindon supporters this week.

A gentleman from Reading was talking to another traveller about the support the Berkshire club attracted last Saturday. The crowd numbered less than 8,000, and the club occupy the third position in the League, and in the course of his remarks he said: "If Swindon were in that position they would have had about 18,000".

We feel that it would probably have proved to have been a correct estimate, but it was pleasant to know that Swindon supporters are known in other places for their loyalty.

We know, at any rate, that they are generous, for on the whole, we receive very cordial support for our efforts. Competition in competitions is steadily increasing too, and there are now at least four large organisations with tickets circulating weekly, in addition to our own.

Christmas Draws are upon us with a vengeance. When we sold a friend a ticket for our own Supporters' Club Draw he showed us tickets for fourteen others in which he was participating.

Knowing his past luck, he was expecting to win a large teddy bear, offered by one of the other organisers, rather than one of the large prizes which we have been able to include in our own list.

The visit of Southend reminded one of our members that it was

against that club in 1926 that Harry Morris played his first game for the Town, and commenced his goalscoring efforts, which set up a record for the club. Swindon's team that day was Nash; Dickinson, Weston; Furness, Bew, S. Johnson; Denyer, Wall, Morris, Eddleston, Thom.

We are informed that Swindon won 5—1 and that Morris scored 3.

It will be remembered that Swindon, that season, were heading well for promotion, until Alec Wall met with a serious injury on Christmas Day against Merthyr Town, and the club eventually finished fourth in the table.

We wonder what those players would be worth today, in terms of transfer fees.

To many present-day supporters they are but names in the record books, but others remember them with pleasure and, no doubt, with quite a degree of nostalgia.

This is the time of the year for reminiscence and we were asked recently what League club in the 1930's had two Swindon-born goalkeepers on its books.

The answer proved to be Brentford with Ted Nash (after ten seasons with the Town) and Fred Fox.

As only a few seasons earlier, Fred Hinton had been a well-known goalkeeper with the Town, Bolton Wanderers and the Spurs, Swindon may have been regarded as quite productive in that era, in that direction.

It is so long since we have seen a League match here that we have little to report at the moment, and, unfortunately, these notes have to be in the hands of the printers just before our monthly Committee Meeting is to be held.

KEY OF THE BOARD

Half-time scores will be given in two sections: First Section indicated by **[1]**. Second Section indicated by **[2]**.

FIRST SECTION

- A—Aston Villa v. Ipswich
- B—Blackburn v. Manchester C.
- C—Blackpool v. West Brom. A.
- D—Chelsea v. Burnley
- E—Manchester U. v. Fulham
- F—Nottingham F. v. Leicester
- G—Sheffield U. v. Arsenal
- H—Tottenham H. v. Birmingham
- I—West Ham v. Bolton
- J—Wolverhampton v. Sheffield W.
- K—Bristol R. v. Luton
- L—Bury v. Leyton O.
- M—Charlton v. Preston N.E.
- N—Leeds v. Newcastle
- O—Liverpool v. Plymouth
- P—Norwich v. Middlesbrough
- Q—Sunderland v. Swansea
- R—Barnsley v. Peterborough
- S—Bournemouth v. Bradford
- T—Crystal P. v. Bristol C.

SECOND SECTION

- A—Halifax v. Notts C.
- B—Hull v. Coventry
- C—Lincoln v. Reading
- D—Northampton v. Brentford
- E—Portsmouth v. Port Vale
- F—Torquay v. Newport
- G—Watford v. Grimsby
- H—Accrington v. Millwall
- I—Aldershot v. York
- J—Bradford C. v. Workington
- K—Carlisle v. Doncaster
- L—Hartlepoons v. Barrow
- M—Oldham v. Gillingham
- N—Southport v. Rochdale

The Rendezvous of all Sportsmen . . .

THE CROWN INN

(Host: Frank Pleyer)

Arkell's Best Ales : Fully Licensed
Snacks, etc.

STRATTON ST. MARGARET Tel. 2339

SUPPORT YOUR HOME

CIVIL DEFENCE

Plays a vital part in saving lives

Particulars:

CIVIC OFFICES - SWINDON

WIN OR LOSE !

THE FOOD IN THE

China Restaurant

IS BEST

107 COMMERCIAL ROAD

SWINDON 6888

Open Daily 12 noon - 11.30 p.m.

For all Chinese and English Dishes

Have you purchased your ticket for the

HALF-TIME

JACKPOT DRAW

TICKETS 6d. each—on sale on the Ground

FOUR PRIZES

Result of Draw on Saturday, 25th November, 1961:

1st Prize—£14-19-0. Ticket No. 10658

2nd Prize—£11-4-3. Ticket No. 11945

3rd Prize—£7-9-6. Ticket No. 9293

4th Prize—£3-14-9. Ticket No. 6380

COATE GARAGE



THE ALCOHOL FUEL

REPAIRS
SERVICING
TYRES

★

OVERHAULS
REBORING
WELDING

Props.: E. V. & W. H. Mattick
MARLBOROUGH ROAD, SWINDON

For something a little different, try

DON JONES

HIGH CLASS CONFECTIONER
AND TOBACCONIST

Always a good selection of
SUCHARDS' - TOBLER
TERRY'S

Quality Chocolates and Presentation
Boxes

112 COMMERCIAL ROAD

6012 SWINDON 6012

Typewriters from £10

FULLY GUARANTEED

DOBELL SHEARMAN

& CO. LTD.

26 HIGH ST. & 33 FARINGDON RD.,
SWINDON Telephone 4961

Only 800 yards to your Dream Car—

NEW ALPHA MOTOR Co.
(SWINDON) LTD.

QUEENS DRIVE, SWINDON

Tel. 5062/63

FOR TOP QUALITY USED CARS

Open 7 days per week from 7 a.m. to 10.30 p.m.
Servicing for all makes of cars

DIVISION III

	P.	W.	D.	L.	F.	A.	Pts.
Bournemouth	21	11	8	2	39	20	30
Portsmouth	20	12	5	3	35	20	29
Reading	21	13	1	7	40	35	27
Crystal Palace	22	10	6	6	46	31	26
Peterborough Utd.	21	12	2	7	52	49	26
Bristol City	22	11	3	8	37	31	25
Queen's Park Rangers	20	9	6	5	47	32	24
Grimsby	21	10	4	7	31	32	24
Northampton	22	9	5	8	43	28	23
Shrewsbury	22	8	7	7	41	38	23
Watford	22	8	7	7	37	39	23
Bradford	21	10	2	9	41	37	22
Port Vale	22	8	6	8	30	29	22
Coventry	21	7	7	7	29	32	21
Hull	19	7	5	7	26	21	19
Halifax	19	7	5	7	29	32	19
Notts County	20	7	5	8	36	34	19
Barnsley	21	7	4	10	43	49	18
Southend	22	6	6	10	28	34	18
SWINDON TOWN	22	5	7	10	34	45	17
Lincoln	20	5	5	10	30	40	15
Brentford	21	5	3	13	20	43	13
Torquay	20	4	3	13	33	47	11
Newport	22	3	4	15	25	53	10

Chappell's Funeral Service

(Fun. Dir.: A. A. Winchcombe)

196 COUNTY ROAD
SWINDON

24 hour Service Tel. 6073

Your local "TEAM" for RENAULT
Sales and Service

CORONATION CAR SALES

67/68 VICTORIA ROAD

Telephone 4964

**SEA VIEW HOLIDAY
CAMP**

YOUR HOST — Mr. BENNETT

WYKE REGIS - WEYMOUTH
Dorset

"COAL!"
"COAL!"
"COAL!"

J. WILMER

ST. MARGARET'S ROAD, SWINDON
Telephone 2535

MEET YOUR FRIENDS AT THE

Southbrook Inn

(Hosts Mr. and Mrs. Jack Scutts)

FULLY LICENSED
CLINCH BEERS, ETC.

SOUTHBROOK STREET, SWINDON
Tel.: 5837

STOP! LOOK!

NU-HOMES

For all Household Fitments

Paints - Emulsions - Wallpapers
Kitchen Units and Bathroom Suites,
etc.

176a Manchester Road
TELEPHONE 2178

FORTHCOMING MATCH . . .

FOOTBALL COMBINATION

SWINDON T. v. CHARLTON A.

TUESDAY, DECEMBER 19th, 1961

Kick-off 7.30 p.m.

**BRITANNIA
MOTORS**

Proprietor: A. GODWIN

205-206 RODBOURNE ROAD
SWINDON PHONE 5303

- **TYRES**
NEW AND REMOULD
CASH OR EASY PAYMENTS
- **ACCESSORIES**
- **QUICK SERVICE AND REPAIRS**
AT SWINDON'S MOST MODERN
LUBRICATION BAY AND
WORKSHOP

*For High Class
Central Heating, Plumbing
Painting and Decorating
Electrical Installations
and Repairs*

NORTH WILTS

Sanitary & Heating
Co. Ltd.

NEWPORT ST., SWINDON

'Phone: 5373/4

Always at your service

L. BIBBY

For all Types, Rags, Iron and Metal,
etc. Spot Cash Paid. Please Telephone
2101 and our van will call.

THE PADDOCK, ERMIN STREET
STRATTON ST. MARGARET

Walcot Greengrocer

G. E. STAMMERS

✽

1 SUSSEX SQUARE
SWINDON

SWINDON 2526

CAN ALSO BE YOUR LUCKY NUMBER ! ! !
if you ring

HOLMES & LUCAS

14A REGENT STREET :: SWINDON

for all your

TELEVISION, RADIO AND ELECTRICAL REQUIREMENTS

LUCKY PROGRAMME

Please retain your programme. An announcement will be made at half-time of two numbers and the holders will be given a stand seat at the next Division III game. The persons who purchased the programmes bearing the winning numbers should call at the office after the game and claim their seats.

2182

FRIED FISH AND CHIPS

Always Fresh - Always Hot

WALCOT FISHERIES

Sussex Square

Wet fish and frozen foods all refrigerated display.

HATTON'S NEWSAGENCY
A. J. D. WOODHOUSE & A. SMITH
Newsagents & Tobacconists & Confectioners
Agents for Wessex School of Motoring
Main Booking Agents for Millers Coaches
6 REGENT CIRCUS (NEAR G.P.O.)
Telephone Swindon 2731

For Insurance or Hire Purchase
CARS - CARAVANS - MOTOR CYCLES, etc.
Consult

D. & H. HENTY LTD.

54 COMMERCIAL RD., SWINDON
SWINDON 5258

PANKHURST

The Palace, Gorse Hill,
Swindon

MOTOR CYCLE - SCOOTER AND
THREE-WHEELER SPECIALISTS

Open Mon. to Sat. 9 a.m. - 8 p.m. Phone 5466

MORGAN'S IRONMONGERS

C.A.S.M.S. (Swindon) Ltd.

2 SUSSEX SQUARE, WALCOT, SWINDON
also at 163 RODBOURNE ROAD Tel. 2516

Paraffin services to all areas town and country
Everything for the home
Precision Tools for Engineering Trade,
Tools for all trades

Maylott Studios

For GROUP & SPORT Photographs
OFFICIAL PHOTOGRAPHER TO
SWINDON TOWN FOOTBALL CLUB

31 FARINGDON RD. Tel. 2792